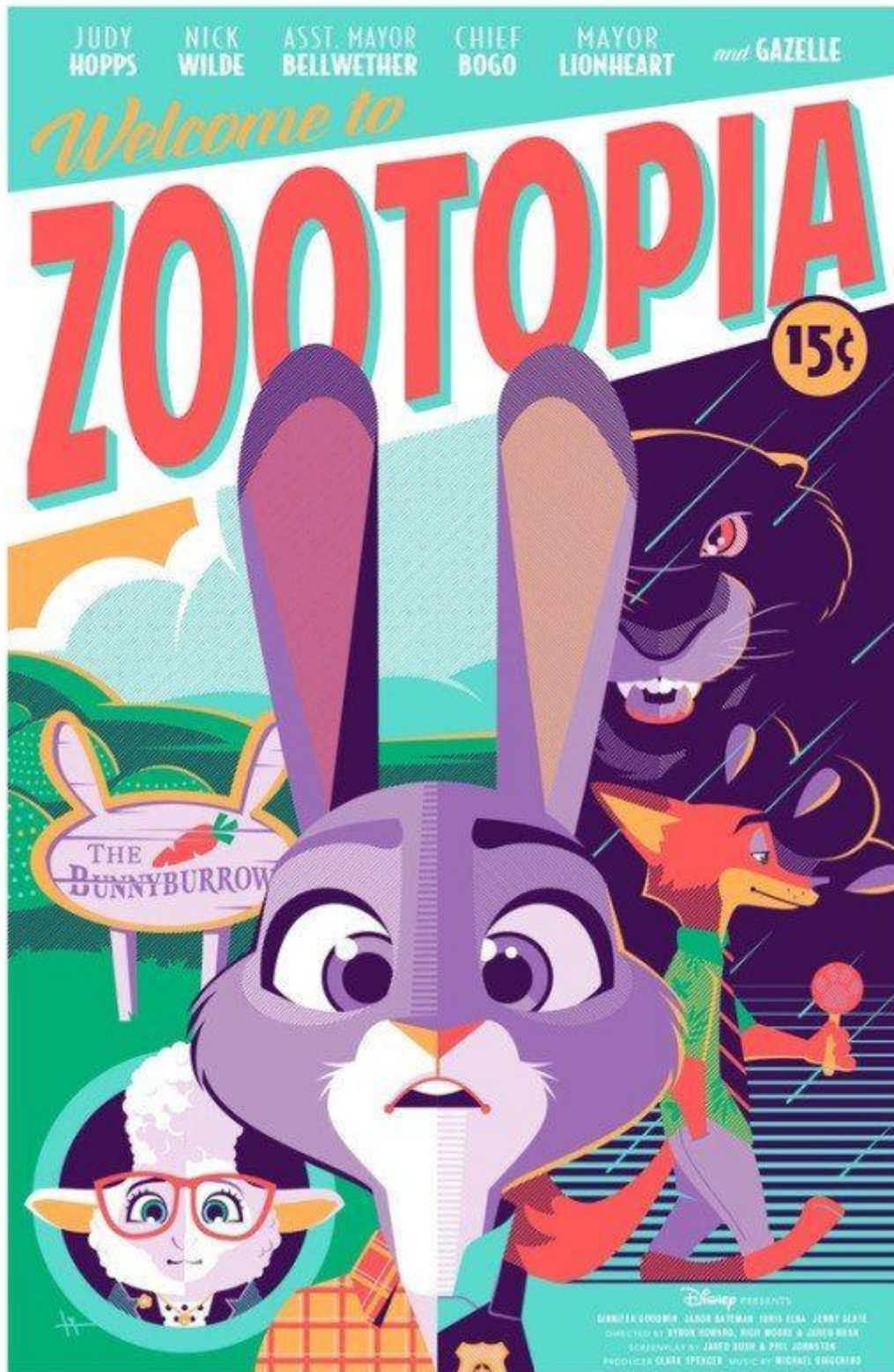


ACTIVITÉS



Disney · PIXAR
**FINDING
 DORY**

IN THEATERS JUNE 17

MEMORY MATCH

Have an adult cut out the cards from all six pages. Fold each card on the indicated line and glue or tape the inside to make a two-sided card with the logo on one side and the character on the other. Place the cards character side down on a smooth surface and mix them up. Turn over two cards at a time to see if they match. If they don't, turn them face down again. Take turns turning over cards using your memory to recall where a matching card may be located. The person who matches the most pairs wins!



HANK

FOLD



FOLD



HANK

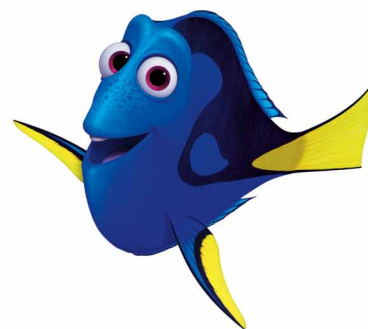
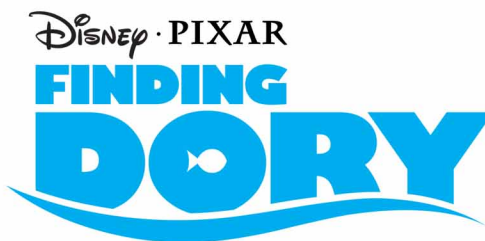


FOLD



DORY

FOLD



DORY

Disney · PIXAR
**FINDING
 DORY**

IN THEATERS JUNE 17

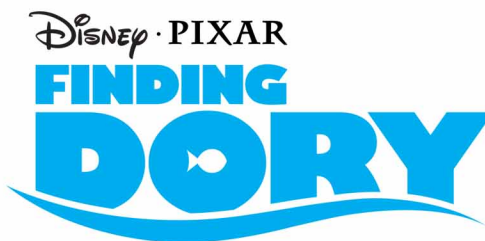
MEMORY MATCH

Have an adult cut out the cards from all six pages. Fold each card on the indicated line and glue or tape the inside to make a two-sided card with the logo on one side and the character on the other. Place the cards character side down on a smooth surface and mix them up. Turn over two cards at a time to see if they match. If they don't, turn them face down again. Take turns turning over cards using your memory to recall where a matching card may be located. The person who matches the most pairs wins!



BAILEY

FOLD



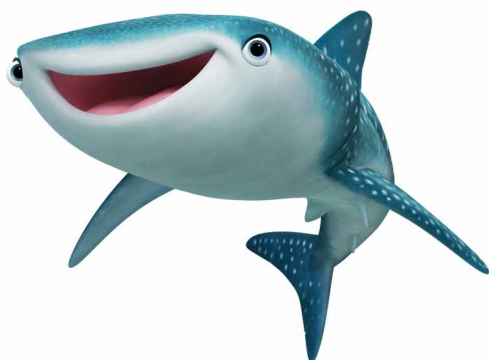
FOLD



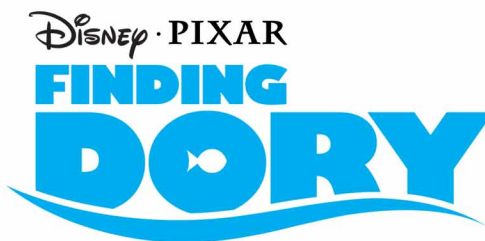
BAILEY



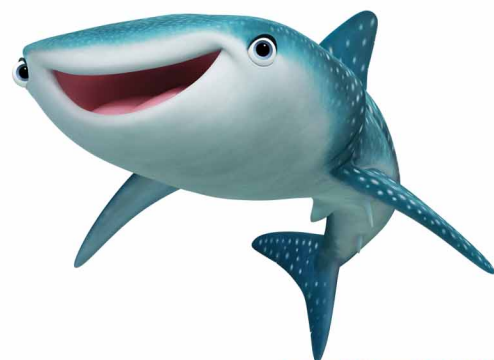
FOLD



DESTINY



FOLD



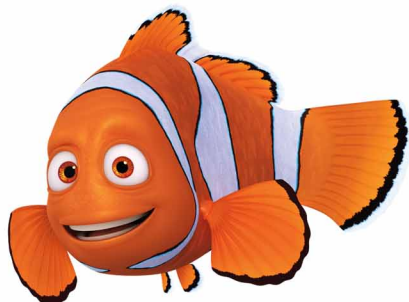
DESTINY

Disney • PIXAR
**FINDING
DORY**

IN THEATERS JUNE 17

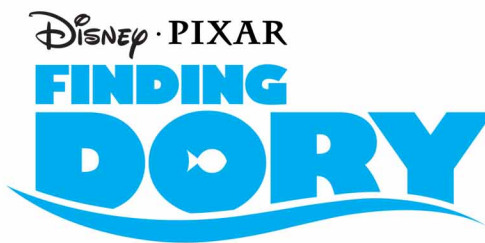
MEMORY MATCH

Have an adult cut out the cards from all six pages. Fold each card on the indicated line and glue or tape the inside to make a two-sided card with the logo on one side and the character on the other. Place the cards character side down on a smooth surface and mix them up. Turn over two cards at a time to see if they match. If they don't, turn them face down again. Take turns turning over cards using your memory to recall where a matching card may be located. The person who matches the most pairs wins!

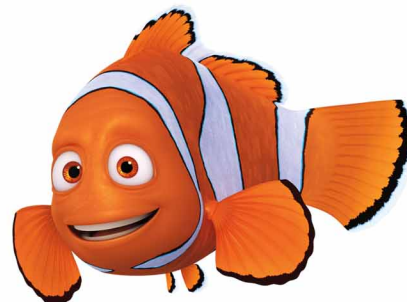


MARLIN

FOLD



FOLD



MARLIN

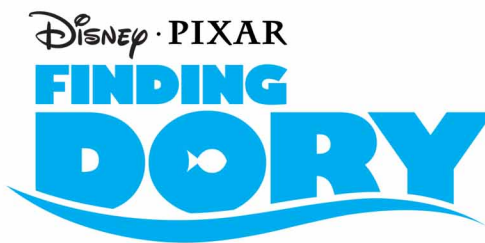


FOLD



NEMO

FOLD



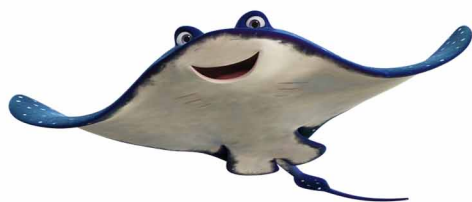
NEMO

Disney • PIXAR
**FINDING
 DORY**

IN THEATERS JUNE 17

MEMORY MATCH

Have an adult cut out the cards from all six pages. Fold each card on the indicated line and glue or tape the inside to make a two-sided card with the logo on one side and the character on the other. Place the cards character side down on a smooth surface and mix them up. Turn over two cards at a time to see if they match. If they don't, turn them face down again. Take turns turning over cards using your memory to recall where a matching card may be located. The person who matches the most pairs wins!



MR. RAY

FOLD



FOLD



MR. RAY



FOLD



BECKY

FOLD



BECKY

Disney · PIXAR
**FINDING
 DORY**

IN THEATERS JUNE 17

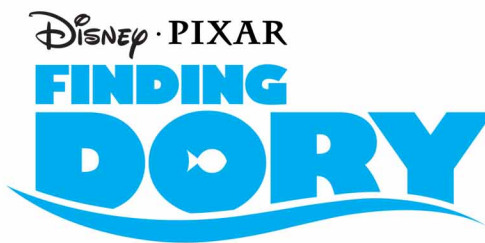
MEMORY MATCH

Have an adult cut out the cards from all six pages. Fold each card on the indicated line and glue or tape the inside to make a two-sided card with the logo on one side and the character on the other. Place the cards character side down on a smooth surface and mix them up. Turn over two cards at a time to see if they match. If they don't, turn them face down again. Take turns turning over cards using your memory to recall where a matching card may be located. The person who matches the most pairs wins!



CHARLIE & JENNY

FOLD



FOLD



CHARLIE & JENNY

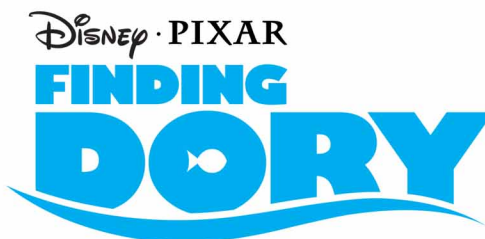


FOLD



SQUIRT

FOLD



SQUIRT

Disney • PIXAR
**FINDING
DORY**

IN THEATERS JUNE 17

MEMORY MATCH

Have an adult cut out the cards from all six pages. Fold each card on the indicated line and glue or tape the inside to make a two-sided card with the logo on one side and the character on the other. Place the cards character side down on a smooth surface and mix them up. Turn over two cards at a time to see if they match. If they don't, turn them face down again. Take turns turning over cards using your memory to recall where a matching card may be located. The person who matches the most pairs wins!



CRUSH

FOLD



FOLD



CRUSH



FOLD



FLUKE & RUDDER

FOLD



FLUKE & RUDDER

Disney · PIXAR
**FINDING
 DORY**

IN THEATERS JUNE 17

MEMORY MATCH

Have an adult cut out the cards from all six pages. Fold each card on the indicated line and glue or tape the inside to make a two-sided card with the logo on one side and the character on the other. Place the cards character side down on a smooth surface and mix them up. Turn over two cards at a time to see if they match. If they don't, turn them face down again. Take turns turning over cards using your memory to recall where a matching card may be located. The person who matches the most pairs wins!



OTTERS

FOLD



FOLD



OTTERS



FOLD



DORY & HANK

FOLD



DORY & HANK

Disney PIXAR
**VICE-
VERSA**



Disney PIXAR
**VICE-
VERSA**





ZOOTOPIA



ZOOTOPIA



ZOOTOPIA



ZOOTOPIA



ZOOTOPIA



ZOOTOPIA

**YAY!
I LOVE
READING!**



**THIS
BOOK
SMELLS
LIKE A
LIBRARY.**



**THERE ARE
AT LEAST 37
THINGS FOR
YOU TO BE
SCARED OF
RIGHT NOW.**



**DON'T
YOU
DARE
PUT
THAT
BOOK
DOWN.**



**READING
HELPS ME
SLOW DOWN
AND OBSESS
OVER THE
WEIGHT OF
LIFE'S
PROBLEMS.**



**DON'T
YOU
DARE
PUT
THAT
BOOK
DOWN.**



**READING
HELPS ME
SLOW DOWN
AND OBSESS
OVER THE
WEIGHT OF
LIFE'S
PROBLEMS.**



**YAY!
I LOVE
READING!**



**THIS
BOOK
SMELLS
LIKE A
LIBRARY.**



**THERE ARE
AT LEAST 37
THINGS FOR
YOU TO BE
SCARED OF
RIGHT NOW.**



**DON'T
YOU
DARE
PUT
THAT
BOOK
DOWN.**



**READING
HELPS ME
SLOW DOWN
AND OBSESS
OVER THE
WEIGHT OF
LIFE'S
PROBLEMS.**



**DON'T
YOU
DARE
PUT
THAT
BOOK
DOWN.**



**READING
HELPS ME
SLOW DOWN
AND OBSESS
OVER THE
WEIGHT OF
LIFE'S
PROBLEMS.**

